

Maze Trivia Pro

©Corn Mazes America
2007-2008

Corn Mazes America
2344 Hayner Road
Janesville, WI 53548
www.cornmazesamerica.com

All material in this packet is protected by copyright in all forms including but not limited to print, electronic, and digital format. This information may not be reproduced or modified in this or any other form without written permission of Corn Mazes America. More information may be found in the Terms of Use at the end of this manual.

Table of Contents

Software Function
Basic Program Operation
Opening and Saving Files
Importing
Outputting Card Data to External Programs
Field Setup
Additional Questions
Acknowledgements
Terms of Use

Software Function

Maze Trivia Pro (MTP) is a new approach to adding that extra adventure to your corn maze. Many corn mazes have some type of extra puzzle for visitors to complete while they walk through the maze.

Trivia questions guiding the visitors through the maze have been popular since some of the first mazes. Unfortunately, when you put up a sign with a question, it is only targeted at a specific group of people. A set of questions that may be too easy for one person may be too hard for another. What if the type of questions does not really interest the visitor?

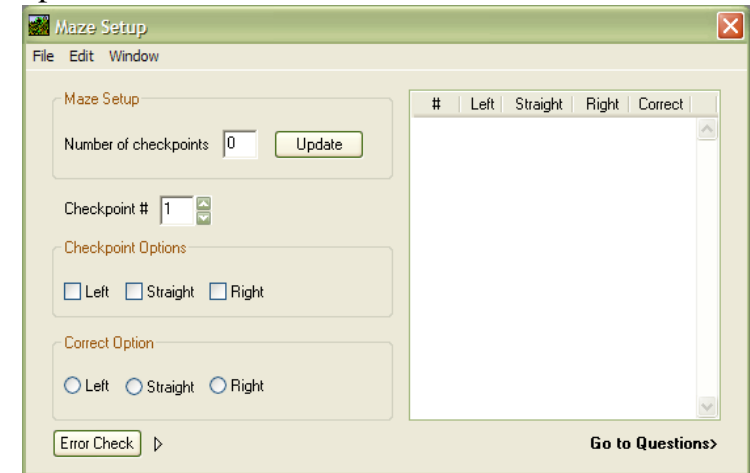
Maze Trivia Pro is designed to solve this problem. Using this software, every group of people going through the maze could potentially have a different set of questions to complete. Even if multiple groups are simultaneously using the same set of questions, they could be in a different order to prevent visitors from cheating off another guest.

You could have a set of questions designed for 1st grade students, another for church youth groups, and another set for scouting groups pertaining to their age levels. Or, imagine that a class will be having a science test the day after their field trip. The teacher could email you a set of questions and answers that would automatically upload into MTP and create a custom trivia card just for that class!

Basic Program Operation

Maze Setup

The first step is to setup the maze so that the computer knows how many checkpoints exist, which turn options are available, and which turn option is the correct answer.



The first step is to select the number of checkpoints. Enter the desired number of checkpoints in the 'Maze Setup' field and select update. This will cause the checkpoint data box on the right side to be filled with data.

Next, you can set the data for each checkpoint. Use the 'Checkpoint #' field to navigate through the checkpoints.

For each checkpoint, select which options, left, straight, or right, the user will have at the given checkpoint. Then, select which option is the best option for a visitor to choose to navigate the maze

using the circle radio buttons on the bottom. The data for all checkpoints will be shown on the right. 'Y' designates the option is selected for the Left, Straight, and Right columns while 'N' designates that the option is not selected. In the Correct answer column, 'L' designates left, 'S' designates straight, and 'R' designates right.

Once you have setup your entire field, select the 'Error Check' button to make sure all your checkpoints have valid options.

When you are ready to start entering questions, you may either select Window>Enter Questions from the menu bar at the top of the page or click 'Go to Questions' in the lower right corner of the screen.

Enter Questions

The 'Question #' field on the top of the screen allows you to navigate through your questions. The total questions you need will be displayed on the right. You must add a question for each checkpoint before you can navigate to the next.

To add a question, enter a question, the correct answer, and one or two wrong answers. If you plan to keep the questions in order rather than randomizing the questions, it will be helpful to note that the second wrong answer field will turn gray if a second wrong answer is not need for that question. For example, if checkpoint #2 only has the option to turn left and straight, there is no need for two wrong answers. However, if two are entered, the computer

will randomly select which one is used. If the question order will be randomized, this feature will have no direct affect on your output.

Once you have entered the question, select 'OK' and you will automatically be taken to the next checkpoint to begin entering more data. Note that the raw data is displayed in the white box on the bottom of the page.

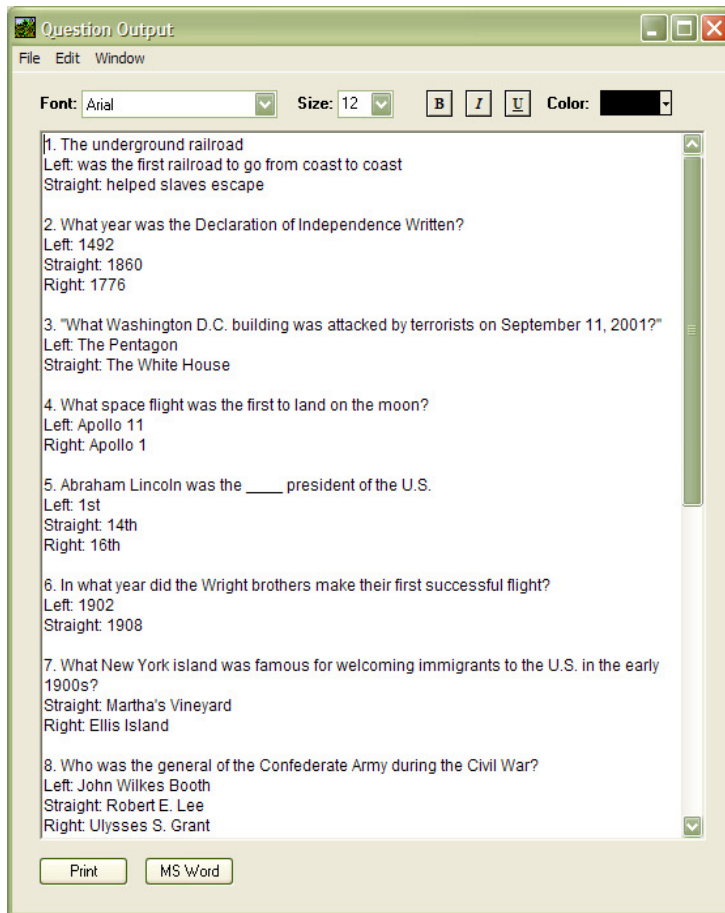
If you want to import questions from an external source, see the 'Importing' section.

The screenshot shows a software window titled "Enter Questions". At the top, there is a menu bar with "File", "Edit", and "Window". Below the menu bar, there is a "Question #" field with the value "1" and a "Total Questions needed in Field: 5" label. The main area contains four text input fields: "Question:" with the text "Who was the first president of the United States?", "Correct Answer:" with "George Washington", "Wrong Answer 1:" with "Abraham Lincoln", and "Wrong Answer 2: (not required for some checkpoints)" with "Benjamin Franklin". At the bottom of the main area, there are five buttons: "OK", "Save Data", "Open Data", "Create Card", and a checkbox labeled "Random Question Order". Below the buttons is a preview window showing the question and answers: "#1 Who was the first president of the United States? George Washington Abraham Lincoln Benjamin Franklin".

Creating a card

Once your field is setup and all your questions have been entered, you may create your custom card. On the 'Enter Questions' screen you may select if you want the questions to appear in a random order using the checkbox.

Click 'Create Card'.



The output screen will automatically appear with the formatted questions. This screen may be used like a standard text editor. If you do not want to add any extra special formatting, you may select 'Print'. From the print menu, you may select how many cards you would like to generate.

If you would like to format the text further such as changing the page layout or adding graphics, click the 'MS Word' button to open the file in an external editor.

Opening and Saving Files

To allow you flexibility to create question sets and field setups independently, there are a few file type setups.

Complete (.mcc): This will save both the field setup and the questions in one combined file. This will be used to save a specific set of questions with a specific field.

Field (.fcp): This will save the field checkpoint setup. If you are using multiple question sets, this file will allow you to open just the field without the questions.

Questions (.mqf): This feature allows you to save questions without the field data. If you want to share questions with another person, this file will allow you to export your questions for other Maze Trivia Pro users.

Formatted Card (.rtf): This data file saves an output format of your questions in Rich Text

Format. This file format can be opened in most text editing programs.

Importing

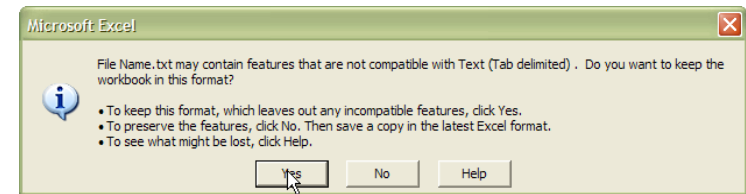
To important questions, go to File>Import Questions. Imported questions must be in tab-delimited text (.txt) format. Here are guidelines for using other software to import questions. Templates were included with your software to make using external software easier to use. Please note that you must use the standard format described in these guidelines or files will not export properly.

Microsoft Excel

Open the file titled 'Excel Spreadsheet'. The template is preset to use twenty questions. If you will be using less questions, select all lines below your desired question and press 'Delete' on your keyboard. If you want to use more lines, copy and paste the standard format used being sure to increase values.

The file is write protected which means you will need to save it with a different file name to save changes.

Once you have completed your questions, go to File>Save As. Select a file name for your file. In the 'Save as type' box, select 'Text (Tab Delimited)'. Click 'Save'.



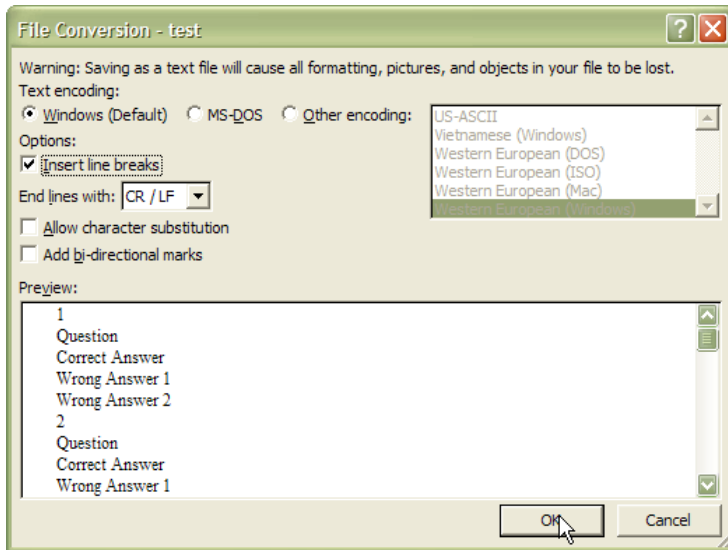
You may be prompted with a message that some features may not be compatible with Text. Select 'Yes' to keep the workbook in the Text format.

You may now import this file into Maze Trivia Pro. It may be helpful to load the field data first.

Microsoft Word

Open the file titled 'Word Template'. This template requires a new line after each piece of information. Follow the standard format if you need to add extra rows. You can check this by selecting the ¶ symbol on the toolbar. This will show where a new line starts.

To save the file, go to File>Save as. For the 'Save as type,' select 'Plain Text.' On the next screen, check the 'Insert Line Breaks' box. Click 'OK'.



You may now import this file into Maze Trivia Pro. It may be helpful to load the field data first.

Text Editor

Open the file titled 'Text Template'. Depending on your computer settings, it will open in a program such as Notepad. Like the Word template, you must have a new line for each piece of information. When you have completed your changes, save the information using the current settings since it is already in Text format.

You may now import this file into Maze Trivia Pro. It may be helpful to load the field data first.

Outputting Card Data to External Programs

From the question output screen, you may select to open the data in Microsoft Word. This will allow you to custom format your card with graphics or specially sized data. If you want to change your view of the information in Microsoft Word, go to View>Print Layout on the menu bar within Word.

If you prefer to use other software to edit your card, you can also copy and paste text into your document. You also may be able to open a formatted card (.rtf) in some software.

Other External Software

External software described in this manual use Microsoft Word and Microsoft Excel, copyright programs of the Microsoft Corporation. All of these file types can also be opened, modified, and saved with the free office program package from OpenOffice.org. Microsoft Word and Excel files can be opened and modified with this software package. Please note that some instructions may vary slightly with these programs. This software can be downloaded at <http://www.openoffice.org>. OpenOffice.org requires Java. While most computers already include Java, you can download the most current version at <http://www.java.com/en/download/index.jsp>.

Additional Questions

For more questions, updates, and software resources, visit <http://www.cornmazesamerica.com/mtp.htm>.

Acknowledgments

Microsoft Office, its sub-products including Microsoft Word and Excel, and any other respective part thereof are a copyright of the Microsoft Corporation.

OpenOffice.org, its sub-products, and any other respective part thereof are a copyright of Sun Microsystems Inc.

Terms of Use

Maze Trivia Pro is protected by copyright in all forms including but not limited to print, electronic, and digital format. This software and provided questions may not be reproduced or modified in this or any other form without written permission of Corn Mazes America outside of the standard use of this program. Persons who have purchased a legal copy of this software package may distribute enclosed data files such as templates within their intended use. Questions created by Corn Mazes America may not be distributed outside of the software license.

This product is only available for direct purchase from Corn Mazes America. If you have received this product from any other source being either paid or free, you do not have a legal copy. This product may only be used by the purchasing company for internal use. Any external use including but not limited to other farms, corn mazes, or modified use is strictly prohibited.

If you believe you have obtained an illegal copy of this program, you are required to terminate use immediately and report the incident to:

Corn Mazes America
2344 Hayner Road
Janesville, WI 53548
www.cornmazesamerica.com
sales@cornmazesamerica.com